

die  
**Rolltor**  
bauer



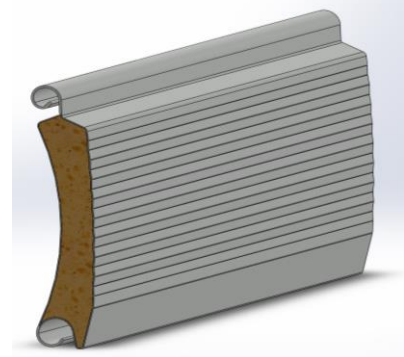
Tortechnik nach Maß



**NOWOTNIK** GmbH

**METALLVERARBEITUNG & TORANLAGENBAU**

Type:	RT 97
Material:	galvanized steel 2 x 0,4 mm
Isolation:	PU-Foam
Surface:	Outside: microprofiled 8mm Inside: smooove with a groove
Windclass:	2



## Details

- Double-walled rolldoor system with galvanized steel lamellas filled with PU-Foam and plastic end pieces.
- Bottom lamella is made out of extruded aluminum with rubber profile prepared for Opto sensor bar.
- Galvanized guide rails with plastic slide strip on both sides.
- Building connection at the lintel (headroom) with brush strip.
- Rolldoor steel tube according to DIN 2448/2458.
- Allowable deflection L/500 with 2-layer varnish surface.
- Welded round blanks and exact winding shaft bolts for engine and bearing.
- Consoles for drive and bearing mounting.
- Electric drive 3 x 230/400 V (dimensioned according to the door size)
- Deadman Control wired (ready to plug in)

## Advantages that convince!

- Own production
- Flexible delivery time
- Good price range
- Good heat and sound insulation
- Excellent winding behavior
- Coil coloring in RAL 9006 or RAL 7016
- Extensive special equipment
- Flexible T-storm anchor
- Optimized guide rails
- Order-related production
- Easy mounting
- Optical match to sectional doors
- Microprofiling
- Safe transport packaging
- DIN EN 13241-1
- TÜV proofed
- Sticker labeled with your Logo
- Decades of experience in the construction of complete rolldoor systems and special rolldoors



